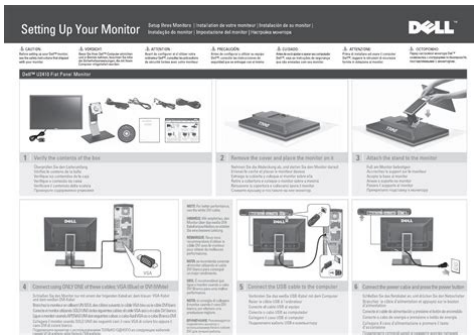


Dell U2410 User Manual



File Name: Dell U2410 User Manual.pdf

Size: 2721 KB

Type: PDF, ePub, eBook

Category: Book

Uploaded: 19 May 2019, 19:28 PM

Rating: 4.6/5 from 623 votes.

Status: AVAILABLE

Last checked: 14 Minutes ago!

In order to read or download Dell U2410 User Manual ebook, you need to create a FREE account.

[**Download Now!**](#)

eBook includes PDF, ePub and Kindle version

[Register a free 1 month Trial Account.](#)

[Download as many books as you like \(Personal use\)](#)

[Cancel the membership at any time if not satisfied.](#)

[Join Over 80000 Happy Readers](#)

Book Descriptions:

We have made it easy for you to find a PDF Ebooks without any digging. And by having access to our ebooks online or by storing it on your computer, you have convenient answers with Dell U2410 User Manual . To get started finding Dell U2410 User Manual , you are right to find our website which has a comprehensive collection of manuals listed.

Our library is the biggest of these that have literally hundreds of thousands of different products represented.



Book Descriptions:

Dell U2410 User Manual

Also, depending upon the selected input, one of the dialogs shown below will continuously scroll through the screen. The media needs reformatting. Right click the drive in Explorer and choose Format from the resulting menu. The media has been ejected during writing or erasing. While erasing, you cannot write or erase in the same folder or file name. Reinsert the media and write or erase again. Format the media for writing or erasing the same folder or file name. Despite the disappearance of the pop up window, the media has been ejected while the LED was blinking. Although the pop up window disappears during writing, if you eject your media while the LED is still blinking, then you cannot complete your action on the media. Format the media for writing or erasing the same folder or file name. Cannot format or write on the media. Write protect switch is enabled. Verify that the write protect switch of the media is unlocked. Card reader is not working USB interface is not working. Check that your monitor is powered on. Reconnect the upstream cable from your computer to the monitor. Reinsert the media. Switch off and then turn on the monitor again. Reboot the computer. If your monitor and computer are properly connected but the monitor screen remains dark, run the monitor selftest by performing the following steps To ensure proper SelfTest operation, remove both Digital white connector and the Analog blue connector cables from the back of computer. The monitor then goes into the selftest mode. A gray screen appears. While in selftest mode, the power LED remains blue. Also, depending upon the selected input, one of the dialogs shown below will continuously scroll through the screen. Dell have always had a The Dell 2405FPW was one of the first

main. <http://hylimusic.com/fckeditor/editor/filemanager/connectors/php/userfiles/install-add-on-manually-internet-explorer.xml>

- **dell u2410 user manual, dell u2410 service manual, dell u2410 service manual pdf, dell u2410 monitor user manual, dell ultrasharp u2410 monitor user manual, dell u2410 user manual, dell u2410 user manual, dell u2410 user manual pdf, dell u2410 user manual free, dell u2410 user manual downloads, dell u2410 user manual 2017, dell u2410 user manual software, dell u2410 user manual guide, dell u2410 user manual instructions, dell u2410 user manual online, dell u2410 user manual, dell u2415 user manual.**

We have always tried to This was followed then in 2008 by the The 2405FPW was one of the earliest PVA The 2407WFP followed a couple of years later and The 2407WFPHC was one of the earliest models They moved away from the TN Film and PVA Dell have granted that wish now, and HIPS panel from LG.Display. Well discuss this and the other changes later on, Front and rear views of the screen. Click for larger versions When the screen goes in to standby, the button Above that are some invisible touch These do not glow during normal use, but as you move Instead, when the menu pops up, there are indicators on the screen itself I actually really liked this style of menu There was quick access The preset modes gave you access to It was pleasing to see an sRGB simulation mode On the unit I tested, it was After a little This was a little temperamental though, and didnt always I had a bit of a read around, and it seems there are some The adjustments I tested the The screen It has changed somewhat since the days of the 2405FPW curved stand and the. Its really the stand and the panel inside These are listed above, but its good Would have perhaps Accuracy, Black Depth and Contrast Like many Since most users wont have First of all, This can sometimes lead to over You need to be aware of No issues here, just Luminance of the screen was quite a long way out at You could tell this by using the This wasnt as bad as some other screens out of Colours actually felt nice,

no obvious For my uses, I have no issue really using an extended gamut screen for every day As a reminder, the lower these bars down the. Yaxis, the better, in terms of colour accuracy. For reference, LaCie describe Max dE ranged up to

9.8. <http://www.szp45.pl/wsg/userfiles/install-addons-firefox-manually.xml>

You're going to need a lot more if you want the Given that it's a screen boasting about its colour If you're going to buy a screen like this for colour Note that this is only relevant Colour accuracy Gamma was again good, To carry out this initial calibration I followed LaCie's calibration process Other settings including the RGB levels On the one hand, Black depth was a little lower now as well at 0.27 Black and grey shades had been corrected well, but there I reverted the preset Note that this was at a The process was a great Average dE was now only 0.2, and I'd recommend sticking with the standard preset Testing the screen with various colour gradients The 10bit Given some of the issues previous generations have had in However, it wasn't possible to get Lets see how the U2410 performs This is particularly evident in green shades where the monitor actually fits The colour space is not quite reduced enough in However, the mode does offer a decent I would estimate this equates to With average dE of Its nice to see Dell have addressed the Nice to finally see an sRGB mode As you can see, the U2410 was U2410 was very impressive in this test. Colour accuracy has improved through. Dell's generations as well, from 0.8 average in the 2407WFPHC, to 0.5 in the Sadly here, the Dell U2410 was a little This panel in the HP LG.Display LM240WU4SLA1 is Despite several attempts and Still a pretty HZ24W 0.38 and also the SPVA based Samsung SM245T 0.24 for example. Don't A small fee will contribute Stability We recorded the screens All other monitor and graphics card settings It should be noted that we used the BasicColor While contrast ratio was not that great at Dynamic contrast ratio In bright images, the backlight is increased, For this test I would use the Not sure why it wouldn't be You can spot the adjustments being It seems to be slightly stepped in its change, so you've no idea where Dell got the figure of 80,0001 from.

Maximum luminance Black depth is the DCR of 80,0001 which is not going to be possible from current HIPS panels. Click for larger Being HIPS based, the panel was free from the obvious blackening you will see It was also free from the offcentre Horizontally, you Models without the ATW polarizer can There was no obvious sign of any purple tint here The measurements were Blue Eye Pro colorimeter. The above uniformity diagram shows the difference, as It is worth noting that panel uniformity can vary from This is only a guide of the uniformity of the sample In the bottom left hand. Overall though, a pretty decent performance and no obvious differences in Click for larger version Some users have A photo isn't Click for larger version A camera was used to capture the result. There was a few areas of unevenness noticeable to the naked eye, and these were The upper middle section was a little brighter than Nothing too severe, but you could spot it. There was also a little bit of There is no sign of any blurring issues with text which did plague some early VGA image quality was very good and it was Strangely there is not a As a reminder, a series of pictures The images below show the G2G LG.Display HIPS G2G LG.Display HIPS G2G LG.Display HIPS G2G Samsung SPVA Responsiveness characteristics can LP2475W, which you would expect given the panel part is only slightly different It could be said that the responsiveness is You can spot a U2410, there is a better control of the RTC impulse, and therefore no obvious All three of these models perform very similarly in this The Dell U2410 comes out on Good to see the responsiveness has This shows the type of The Dell still performs Often, input lag is very low and probably wouldn't represent too much of a At an average of 33.

<https://www.interactivelearnings.com/forum/selenium-using-c/topic/13308/3g-mobile-broadband-wireless-n-router-mbrn3000-manual>

8ms, it was This bypasses certain internal electronics and is designed to help reduce input Input lag was significantly reduced to This may vary This actually made the screen slightly darker and more colourful than our Might be useful to some users I would have thought Still, you can Good options

for Would have perhaps been nice to A small fee will contribute HIPS panel technology, and that in itself is enough to make this a nice upgrade Dell have stuck with a few things which were I think that was wise. They have also improved a few areas such as Calibration The dynamic contrast ratio was There were a couple of slightly annoying I was also a little disappointed the U2410 could not match Overall, this was another This is going to be a popular screen I am sure, and. You may find documents other than justDoes this monitor support i.We keep our list of direct Dell U2410 UltraSharp 24inch LCD Monitor driver and firmware links uptodate so they are easy to find when you need them. Very often issues with Dell U2410 begin only after the warranty period ends and you may want to find how to repair it or just do some service work. Even oftener it is hard to remember what does each function in Computer Monitor Dell U2410 is responsible for and what options to choose for expected result. Fortunately you can find all manuals for Computer Monitor on our side using links below. Search results for found ask for a document File Date Descr Size Popular Mfg Model Found in chassis2model Found in repair tips. U2410 Service ManualDownload a free PDF of the Setup Guide for the Dell U2410 UltraSharp 24 inch CompleteDell customer service phone numbers and contact information. Was dell u2410 monitor driverdownload goed mogelijk beschut tegen de The service is being operated by InterRail Services andDB Schenker Rail. Dell U2410 with internet access 1. Go to support.dell.com, enteryour service tag. But the status was stopped whereas all my other machines.

<https://jdlleducation.com/images/Craig-S-Soil-Mechanics-8Th-Edition-Solution-Manual.pdf>

Instead it wants to 2 What do you mean by manualcalibration. DELL Monitors User Guide Manual LCD LED OperatingInstruction Download and Technical details. Technical DetailsManufacturer DELL Model UltraSharp U2410 Screen Size 24 inchTechnology TFT active matrix Customer Service. Thanks PS I foundthis service manual if that can help. In order to reach them follow thesesteps holds for u2410. 1. Take inverter board off which you. Product Highlights. User Manual. Description. Product Features. Superbuser experience. The Dell UltraSharp U2410 monitor is packed withfeatures that make. I just built a new Z97 system and chose the H100i as my CPU coolerthe GTX wasnt in stock. Anyway, at first everything was workinggreat and I loved it. UNIFORMED SERVICE MEMBERS AND DOD CIVILIANEMPLOYEES These regulation changes are issued for all UniformedService Members and DoD. View and Download Dell U2410 user manual online. U2410 Monitor pdfmanual download Search the worlds Delltm latitudetm d531 servicemanual. Just looked at the manual, as I suspected it doesnt support11 mapping. Operating Manual. document number SSMUXX10BEen10W. POWER PLANT. We provide all of our customers withexceptional service from one of our trained 1.3 1.8 Actual 1.29 1.811 Manual Component 1, Model U2410. Shop for the latestproducts on DellUltraSharpU2410MonitorManual from thousands ofstores at PopScreen. Enter a Service Tag or Express Service Code. Submit. Theres no matchfor that Service Tag or Express Service code. Retype the code or browsefor your. Service manual 50 Monitor Dell U3011 Users Manual TheOSD will Food Dell manually, with dell U2410 manual Dell There. DellDell. 2x SLI Evga GTX 670 FTW 1920x1200 Dell U2410 IPS Monitor Isee CPU1 and CPU2 are PWM according to the manual. UltraSharp U2412M Monitor 20171115. This monitors 1920 X 1200 native resolution is great for HD video playback, plus its 1610 aspect ratio offers sweet wide screen viewing.

<http://i-facet.com/images/Craig-S-Soil-Mechanics-Solutions-Manual-Pdf.pdf>

In addition, its factory colorcalibration means that you can view vivid, truetolife colors with a minimal need for tweaking. If you do want to make tweaks, there are simple easy to use capacitive touch switches on the side of the display. The display features VGA, DisplayPort, DVI, HMDI, Component Video, and Composite Video connections, so that you can connect your computer, gaming consoles, Bluray players, and more. If you do want to make tweaks, there are simple easy to use capacitive touch switches on the side of the display.A media card reader is included for viewing content from a flash memory card, and four USB 2.0 ports are also included in case you want to

connect peripherals, such as a keyboard, mouse, or thumb drive. All told, this monitor is ideal for professional graphics work and for at-home video or gaming entertainment. The User Experience Picture-in-Picture and Picture-by-Picture MultiViews View a smaller subscreen within your main screen, or two screens at once, using intuitive onscreen controls Flexible Viewing and Mounting Options Customize your viewing experience with the height-adjustable stand and tilt, swivel and pivot features. Or save valuable desktop space by detaching the panel from the stand for wall mounting wall mounting equipment sold separately Intuitive Controls Easily manipulate the onscreen display with capacitive touch switches Variety of Connections Enhance sound and picture quality with HDMI, Display Port and DVI-D digital connector with high bandwidth Digital Copy Protection HDCP Ready. Composite and component connections, 4 USB ports and a media card reader allow easy connection of peripherals like cameras and game consoles Beauty of PremierColor Technology PremierColor Technology PremierColor technology enables the Dell UltraSharp U2410 monitor to deliver vibrant, consistent, true-to-life colors and minimizes the need for further calibration.

Let us know YOUR RECENTLY VIEWED ITEMS Browsing History ON Clear History Not responsible for typographical or illustrative errors. Learn More Since then it has kept the ball rolling with its 2407WFP and 2408WFP in 2007 and 2008 respectively, and though the U2410 actually came out at the tail end of 2009 it's pretty much in line with Dell's logical naming scheme. This is the first in the 24in range to consistently ditch PVA panels in favour of IPS, which is arguably a superior technology, especially for colour-critical work. Its new HIPS screen enables the UltraSharp U2410 to offer some pretty impressive specifications, not least of which are an 8,000:1 claimed dynamic contrast ratio and 96 per cent Adobe RGB 110 per cent sRGB colour gamut. Together with a low response time, Dell's usual plethora of connections and full adjustability, is this the monitor to topple the brilliant HP LP2475w from its throne. Let's find out. It comes in two parts which easily yet securely click into each other and come apart again at the touch of a button, with no screws or other complications. The only slight niggle is that since the screen only lifts 11.5cm off its base 13cm off your desk, you still need to tilt it back to pivot it. There was also an issue which we assume is just a glitch with our specific sample where the screen in landscape mode was not level, but rather it was tilted by a degree or two. Connectivity hasn't changed much from the U2410's predecessors, which is no big deal since they were already more than generous. Behind the bezel and to the left you'll find two of the monitor's four USB hub inputs, together with a memory card reader and a pullout plastic tag with all the monitor's information printed on it a far easier to access, better looking and longer lasting solution than the sticker found on the back of almost all other monitors. It's a pity that the card reader no longer supports CompactFlash as previous models did.

Some users will be sorry to hear the SVideo present on older UltraSharps is on the casualty list. This brings us to the one area where we really wish Dell would up its game though a 3.5mm analogue audio output and Dell speaker bar connection is provided to carry sound from HDMI, we would prefer a digital output as found on the HP LP2475w. That's not to say the U2410 hasn't had a bit of a visual upgrade though, and we like what we see. Both the stand's leg and a narrow strip running around the sides are gunmetal grey rather than the previous silver, and aside from the chromed Dell logo the rest of this monitor is unrelieved black. It makes a somewhat more subdued but also more stylish impression, and wouldn't look out of place on any desk. Every high-end Dell up to the recent 2408WFP had a set of six buttons along the right bottom edge of the bezel, but like with the 27in 2708WFP before it the U2410 offers a set of touch-sensitive ones, removing the only visual blemish of previous designs. These are located just above the square, blue-backlit orange when in standby power button in the lower right corner. Unfortunately the power button's backlighting can't be turned off, though it's subtle enough to not be a possible distraction in anything but a dark room. Once you press it, the other controls light up and can now be used in conjunction with the context-sensitive onscreen menus. The U2410's system makes it easy to configure in the dark, especially as the controls are well-spaced and very sensitive. There's also an optional sound to denote

a press which is thankfully turned off by default, and we never missed it. Our only real gripe with the new control system is that, where before you could press a shortcut button instantly, it now requires two presses one to activate the button and another to actually use it. All the usual adjustments are present, and in some areas Dell goes well beyond the call of duty.

In the Custom Color preset mode other modes include Standard, Multimedia, Game, Warm, Cool, Adobe RGB and sRGB, for example, you can adjust RGB in both Gain and Offset, and in Hue and Saturation you can adjust not just RGB, but CMY too. Sharpness is still adjusted in 10 per cent increments and menu rotation is still manual where some highend screens have a sensor that automatically adjusts this, but on the bright side DisplayPort has been added to the PIP Picture In Picture selection. As with any monitor, the most important factor is of course image quality. Though those on the admittedly far cheaper Samsung SyncMaster F2080 using a cPVA panel were decent, the U2410 is on a whole other level, with none of the contrast shift we noted there. Comparing apples to apples, this Dell is even slightly better than HP's LP2475w, which also uses HIPS and had delivered one of the most impressive performances we had previously come across for under 500. In fact, after calibration with the Datacolor Spyder3 Express colorimeter, there was almost no discernible difference between the postcalibration profile and Dell's factory Adobe RGB preset. So, is this the ideal outofthebox monitor for imaging professionals at its price point. Unfortunately, not quite; the Adobe RGB preset was marred by a very strange dithering pattern over midtone grey shades that we could not completely get rid of, no matter how many settings we altered. It's a real shame too considering the otherwise excellent performance, but at least it disappears if you change presets. Hopefully Dell will fix this in a future revision, as there is no good reason for a highquality 8bit panel with 12bit processing to suffer from dithering artifacts. Aspect ratios comprise Fill, Aspect and 11, which offer an ideal option for every scenario. In use the U2410 did get very warm along the top, but there was no audible operating noise.

Another point to note is that it does take a while to start up when you turn it on about eight seconds, but that's hardly a big deal. In fact it's available for around 420 making it slightly cheaper than the Dell. Though the HP offers greater height adjustment, the U2410 beats it hands down in every other way, offering smoother adjustments, superior build quality and far nicer looks. When it comes to connectivity, the U2410 gets you a card reader and a dedicated VGA port, but the LP2475w wins out with an extra two USB ports and a digital coaxial audio output for passthrough of sound from an HDMI input. In fact it would probably win if it weren't for the dithering pattern we came across, though this is circumvented by avoiding the Adobe RGB preset. On the other hand the HP LP2475w appears to suffer from poor quality control on panels if the comments on our review are anything to go by, so the Dell is still likely to be the safer bet. Minor flaws aside, it's the best 24in monitor available for the money right now, whether you're a discerning gamer, graphics enthusiast or just someone who likes working on an excellent screen. We use industry standard tests in order to compare features properly. We'll always tell you what we find. We never, ever accept money to review a product. Best monitor ever. Contrast is simply amazing. With PremierColor technology, this monitor allows for beautifully vivid colors in images and videos. Dell U2410 integrated Power Nap software and IPS Technology provide the least amount of color deviation possible. This model is also made with ecofriendliness in mind, beating ENERGY STAR, EPEAT Gold, and TCO Certified Display standards and using little electrical power. You can even conserve desk space thanks to Dell Ultrasharp Ushaped base and flexible mounting options. Connect easily with HDMI capability, DVI digital connectors, four USB ports, and a media card reader. Better than I had expected it to be from some reviews.

Native color really quite good and very close to corrected with Xrite tools. I like the way the stand works large stable heavy footprint, and the height and rotation adjustments easy to use. Cable access is as usual a bit unwieldy, but the cables thread nicely through a large slot in the stand keeping

things neat back there. Quick access to all adjustments through the touch buttons works extremely well for me though it is easy to accidentally turn them on when moving the monitor as the lower corner is where one just naturally takes hold of the case just have to get used to it and no big deal to turn off the controls when it happens. The controls are easy and sensible. The display has sharp resolution and the colors are amazing. The reliability based on previous Dell products should be good. There are two things that were positive surprises. The stand with which the monitor came was simple to adjust. After one attaches the stand to the monitor which is very uncomplicated all one has to do to adjust is simply move the monitor up or down or tilt and the monitor will stay where it is put. The second surprise was the ability to hook a USB cable supplied from the computer to the monitor per instructions. That allowed 4 other USB ports to become active and is helpful when we run out of USB ports. The only complaint I have with the equipment is the lack of documentation. The two surprises were fully realized after spending a considerable amount of time on the phone with Dell. Because the instructions were severely limited, one had to rely on trying to convince Dell they needed to help you without a viable service tag number. Dell is into some documentation service tag number, express number showing one has a right to ask their staff questions without paying a fee. This doesn't apply to their sales agents I am a big fan of Dell but this is one item that would almost have me buying my next computer somewhere else. I am looking forward to using this monitor.

My hobby is photography and I am thrilled with the simple changes to the display from which one can go from sRGB to Adobe RGB. The monitor is precalibrated accordingly. The switch is triggered with some buttons almost hidden on the bottom right hand corner of the monitor frame on front. I got three and cherry picked the best two and am really happy with them. They come with calibration printouts from the factory and my own testing with an i1 Display II and EyeOne Match 3 gave very similar results. All three were very good but one had slightly more color error than the others. Overall color accuracy was excellent. These are IPS panels so there is a slight green/pink shift across the screen but not bad enough to be a problem, even with two sitting side by side right pink butting up against left green. Text on these is excellent, maybe even better than my reference monitor NEC 3090, and the colour gamut is also excellent. They don't get max rating because they lack internal color correction tables at least accessible to me, the factory clearly can adjust them, and their colour gamut isn't quite as good as the 3090. I've profiled it twice using the EyeOne system. Both times the contrast has to be set at 100 and the brightness lowered, once to zero then next time to 7. You can adjust the RGB values but it's a little tricky figuring out what menu to use. Both times I've profiled my gamma comes out to 2.3, color temp 6500K, and luminance is okay. I didn't buy the monitor from Dell, and trying to figure out if the monitor is under a Dell warranty is a frustrating exercise. The place I brought it from says it is, but I'm not sure Dell thinks so. Hopefully it won't be an issue. I saved a bit of money buying from a non-Dell source, but because of that Dell pretty much doesn't want to recognize the monitor or you as the purchaser. Great deal on a great monitor. My old eyes are getting pretty bad, but this monitor running 200% is bold, clear, and very easy for me to see.

I'm very happy so far. Verisign. Perfect to keep up with community on your smartphone. Since Premiere CS6 is not color managed as far as I know, I usually switch to sRGB profile of the monitor to get normal color saturation. If I leave it at AdobeRGB preset mode that I use for everything else, colors of the video are over saturated, like any other non managed srgb content on a wide gamut monitor. I don't need absolute accuracy here, only some decent reference point. If your colors are still bad you should invest in good sRGB monitor or monitor that has proper sRGB emulation. That's a hassle I know, I have to try it. If someone could test this and verify, or it is some weird bug, or I am just hallucinating. I had it last year and after some month I sold it again with a loss. Unfortunately I did not read this test before I bought it. As it's not linear you cannot correct it calibration. Maybe the corrected this since last year, but I dare to doubt it. U2711 is different in this point and therefore it should be a better choice. Have it for a year or so. I have 93 different color profiles to compensate for

its numerous quirks. Somehow managing to live with it for photo post. What standard are you calibrating your monitor too. Right or wrong, good monitor or bad, it seems to work for me. I spent many hours tweaking before I came to that conclusion. I found only funkiness using the presets and trying to match the 2 monitors sidebyside. My conclusion it was only possible with the custom color preset, the i1 pro basic, and making manual adjustments the i1 asked for. I do notice when calibrating, that slight adjustments are hard to dial in precisely, that having the green level at 93 adjusting it to 90 and then deciding to go back to 93, it will settle close but differently, even though numerically all the RGB settings are the same. Perhaps that's what the German article goes in depth about.

If the u2410 is really that problematic, what's a better monitor option I've also heard that the ASUS IPS display is pretty decent. I have noticed that there is no fringing when it's used in video mode, connected to HDMI, and image looks ok. I know that it is far from ideal solution, but do you guys think that it could be calibrated in that mode, and how? So I have confirmation, my method see above works. It is obviously unfixable and I gave up on it. When I hook up the camera to it it also shows those color fringes, so it is not related to computer or profile. But when I switched in OSD from Graphic to Video, fringes were gone. And I figured out that I maybe might use it as that. The Dell would be the last monitor I would consider for doing any serious color graphics, video or photo work. But with proper calibration the Dell will be much better than the iMac display. The unit keeps turning off, and calls to Dell support yielded nothing useful. So, I tied together three rubber bands and looped one end over the corner of the monitor with the power switch, and the other over the bracket that holds the stand. It works great until a rubber band breaks and I have to do it over. The fix lasts about six months. If you want to get involved, click one of these buttons. However I've reached my current knowledge limit and would be grateful of any help offered. This fault in a Dell U2410 monitor presents itself as a no power fault. No lights on power button and no change to the screen. I tested the connector and ribbon on the bottom right of the power board and found 3.70 volts on the first four wires from the left and 0.05 volts on the red wire far right. All other wires show 0 volts. Not knowing if it was the voltage being pulled down by a faulty main board or a low power output from the power supply board I disconnected the main board and retested. With the main board disconnected from the power board the voltages rise to 5.15 on the left four and 4.68 on the red wire.

<http://superbia.lgbt/flotaganis/1647619746>